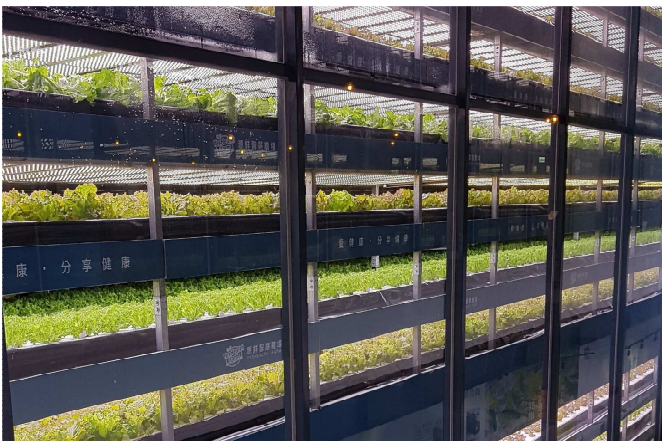


ENERGY AND FOOD

4th Interdisciplinary Winter School 2020



Food Supply Chain, source: HSWT/H. Mempel



Mega City Farming in Asia, source: HSWT/S. Wittmann



Searching for the Ideal Growing Formula, source: TUM/ MSE

Topics

- Challenges in times of urbanization, population rise and climate change
- Food-Energy-Water-Nexus
- Water and soil quality
- Life-Cycle-Analysis of food production systems
- Key indicators for sustainable vertical farming

Goals

- Understanding the interaction between food, energy and water
- Assessing sustainability aspects in food production, processing and the whole supply chain
- Recognizing the need of a holistic approach in evaluating food systems
- Networking and scientific interdisciplinary exchange

Facts

- February 16 - 20, 2020
- Where: Hotel Alpenblick, Ohlstadt (between Murnau and Garmisch-Partenkirchen)
- Organization: Graduate Center Munich School of Engineering (MSE) at TUM
- Costs: 500 € p.p. (incl. excursion, board, lodging)
- Application deadline: Dec 05, 2019
- Who: up to 30 participants (doctoral candidates, post graduates)
- 3 ECTS with presentation, 1 ECTS without presentation
- Organization: Graduate Center Munich School of Engineering (MSE) at TUM

For further information please visit:

<http://www.mse.tum.de/winterschool2020>